

3.14 Recreation

This section describes the environmental and regulatory settings and draft significance criteria with respect to recreation resources.

3.14.1 Environmental Setting

This subsection describes the environmental setting for recreation resources within the study area. The study area includes recreation resources within 1 mile of the proposed project components (i.e., temporary workspace, permanent right-of-way, and aboveground facilities). The study area is located almost entirely within San Diego County, California, and portions of unincorporated San Diego County; the cities of San Diego, Escondido, and Poway; and federal land (Marine Corps Air Station Miramar). A portion of the study area crosses over into Riverside County; however, no recreation resources were identified.

3.14.1.1 Methods

Recreation resources in the study area were identified through site visits, and reviews of national and state parks databases, aerial photographs, planning documents, and databases.

The following planning documents were reviewed:

- County of San Diego General Plan (County of San Diego 2015)
- Bonsall Community Plan (County of San Diego 2011a)
- Rainbow Community Plan (County of San Diego 2014)
- County of San Diego Parks Master Plan (County of San Diego 2016c)
- County of San Diego Community Trails Master Plan (County of San Diego 2005)
- San Dieguito River Park Concept Plan (San Dieguito River Park Joint Powers Authority 2002)
- City of Escondido General Plan (City of Escondido 2012)
- City of Poway Comprehensive Plan (City of Poway 1991)
- City of San Diego General Plan (City of San Diego 2015)
- City of San Diego Rancho Bernardo Community Plan (City of San Diego 2007a)
- City of San Diego Rancho Encantada Precise Plan (City of San Diego 2007b)
- City of San Diego Scripps Miramar Ranch Community Plan. (City of San Diego 2013)

3.14.1.2 Recreation Resources

Recreational areas within the study area are illustrated in Figure 3.14-1. Recreational areas that are crossed by or are adjacent to the proposed project are identified and described briefly in Table 3.14-1. Numerous recreational areas, including existing and proposed campgrounds, sports fields, public parks and recreation areas, golf courses, and country clubs are located in the study area.

Table 3.14-1 Existing and Proposed Recreational Facilities Adjacent to or Crossed by the Proposed Project

County/Township	Recreational Facility	Recreational Facility Details	Proposed Project Component(s)
Unincorporated San Diego County			
Unincorporated San Diego County Existing Facilities	Pala Mesa Golf Resort	18-hole golf course	Line 3602 would be adjacent to the golf course (MPs 6.0 to 7.0).
	Rancho Monserate Country Club	A resident-owned community that includes a 9-hole golf course	Line 3602 would be adjacent to the golf course (MPs 9.1 to 9.2).
	All Seasons RV Park and Campground	Resort that includes 150 campsites, picnic tables, a toddler playground, and an approximately 5-acre lake	Line 3602 would be adjacent to the campground (MP 13.8).
	Castle Creek Country Club	18-hole golf course	Line 3602 would be adjacent to the golf course (MPs 13.8 to 14.2).
	Welk Resorts San Diego Golf Course	500-acre resort that includes two golf courses, pools, and hotel accommodations	Line 3602 would be adjacent to the golf courses (MPs 15.8 to 16.2).
Unincorporated San Diego County Proposed Facilities	Fall Brook Loop Trail/East Mission Rd	Proposed 1.4-mile-long trail along E Mission Rd	Line 3602 would cross the trail at MP 3.8.
	Gird Valley Loop Trail/Reche Rd	Proposed 2.2-mile-long trail along Reche Rd	Line 3602 would cross the trail at MP 5.1.
	Pala Mesa Trail	Series of proposed trails near the Pala Mesa Golf Resort	Line 3602 would cross the trail at MPs 5.8 and 7.5.
	Pala Road Pathway	Proposed 4.9-mile-long trail along Pala Road	Line 3602 would cross the trail at MP 8.3.
	Fallbrook Loop/San Luis Rey River Trail	Proposed 4.3-mile-long trail along Key Canyon	Line 3602 would cross the trail at MP 8.8.
	Old Highway 395	Proposed trail along Old Highway 395. Bicycle lanes are currently present.	Line 3602 would be parallel the highway at MPs 4 to 11 and 13 to 18.5; it would cross the trail at MP 11.3.
	West Lilac Rd Pathway	Proposed 2.7-mile-long trail along West Lilac Rd	Line 3602 would cross the trail at MP 10.7.
	Supply Line Trail	Proposed 3-mile-long trail along private access roads	Line 3602 would cross the trail at MP 10.8.
	Camino Del Rey Pathway	Proposed 1.1-mile-long trail along Camino Del Rey	Line 3602 would cross the trail at MP 13.3.
	Circle R Dr Pathway	Proposed 2-mile-long trail along Circle R Dr	Line 3602 would cross the trail at MP 14.2.
South East Bonsall Trail	Proposed 3.3-mile-long trail along Lawrence Welk Ln	Line 3602 would cross the trail at MP 15.8.	

Table 3.14-1 Existing and Proposed Recreational Facilities Adjacent to or Crossed by the Proposed Project

County/Township	Recreational Facility	Recreational Facility Details	Proposed Project Component(s)
	Champagne Trail	Proposed 1.8-mile-long trail to connect Old Highway 395 to the Hidden Meadows Community. Proposed uses include bicycling, hiking, and equestrian activities.	Line 3602 would cross the trail at MP 17.
	Welk Pathway	Proposed 2.3-mile-long trail parallel to Old Highway 395	Line 3602 would be adjacent to the trail MPs 16.8 to 19.
	Deer Springs Road/Mountain Meadow Pathway	Proposed 2.9-mile-long trail along Deer Springs Rd and Mountain Meadow Rd	Line 3602 would cross the trail at MP 18.5.
	Jesmond Dene Rd Pathway	Proposed 2.7-mile-long trail along Jesmond Dene Rd	Line 3602 would cross the trail at MP 19.1.
City of Escondido			
City of Escondido Existing Facilities	Escondido Community Garden	Community garden with 80 plots and picnic area	Line 3602 would be adjacent to the community garden (MPs 23.3 to 23.5).
	Felicita Mini Park (Escondido City Park)	0.16-acre park along Escondido Blvd	Line 3602 would be adjacent to the park (MP 26).
	Kit Carson Park	Regional park that includes a sports complex with softball, baseball, soccer, tennis, skateboard, and roller hockey facilities; a disc golf course, picnic areas, walking and hiking trails, a toddler playground, and an arboretum.	Line 3602 would be adjacent to the park (MPs 28.6 to 29.2; right-of-way would be in an undeveloped area of the park).
	The Vineyard at Escondido Golf Course	18-hole public golf course located north of Lake Hodges	Line 3602 would be adjacent to the golf course (MPs 28.9 to 29.2).
City of Poway			
City of Poway Existing Facilities	Adobe Ridge Neighborhood Park	Community park along Pomerado Rd that includes basketball courts, picnic tables and shelters, and a children's playground	Line 3602 would be adjacent to the park (MP 35.9).
	Arbolitos Mini Park and Sports Field	Small community park that includes basketball courts, picnic shelters, soccer fields, and a children's playground	Line 3602 would be adjacent to the park (MPs 36.2 to 36.4).
	Poway Oaks Neighborhood Park	0.43-acre park along Pomerado Rd	Line 3602 would be adjacent to the park (MP 38.2).
	Poway Holding	Over 261 noncontiguous acres of publically accessible open space. Amenities are limited to trails.	Line 3602 would be adjacent to the open space (MPs 38.7 to 39.3).

Table 3.14-1 Existing and Proposed Recreational Facilities Adjacent to or Crossed by the Proposed Project

County/Township	Recreational Facility	Recreational Facility Details	Proposed Project Component(s)
City of San Diego			
City of San Diego Existing Facilities	Trans County Regional Trail	An existing system of trails that will eventually stretch 110 miles from the California Coastal Trail to the Pacific Crest Trail. Existing uses include bicycling, hiking, and equestrian activities.	Line 49-31C crosses the trail at MP 38.9.
	San Dieguito River Park – (City of San Diego portions)	The San Dieguito River Park is the agency responsible for creating a natural open space park in the San Dieguito River Valley. Some trails within the city of San Diego or county-managed preserves are part of the larger San Dieguito River Park, and most trails within the network are open to hikers, bikers, and equestrians.	Line 3602 would cross the park between MPs 29.6 and 30.8; MLV 7, Line 1600 cross-tie (MP 29.3) and Staging Area/Laydown Areas #6 – Lake Hodges West (MP 30.4) and #6A – Lake Hodges East (MP 30.7) located within the park.
	Mule Hill Trail	An existing 1.4-mile segment of the Coast to Crest Trail located in the San Dieguito River Park. Existing uses include bicycling, hiking, and equestrian activities.	Line 3602 would cross the trail at MP 29.8. The MLV 7 and Line 1600 cross-tie (MP 29.3) would be located adjacent to the trail.
	Highland Trail	An existing 2.1-mile-long trail located in the San Dieguito River Park. Existing uses include bicycling, hiking, and equestrian activities.	Line 3602 would be adjacent to the trail (MP 30.8).
	Battle Mountain Open Space	Hilly, open space with a steep public hiking trail (Battle Mountain Trail) that overlooks the surrounding community of Rancho Bernardo in the city of San Diego	Line 3602 would be adjacent to the open space (MP 31.1).
	Oaks North Golf Course	27-hole golf course	Line 3602 would be adjacent to the golf course (MPs 31.8 to 32.3).
	Country Club of Rancho Bernardo	18-hole golf course	Line 3602 would be adjacent to the golf course (MPs 32.5 to 32.7).
	Scripps Miramar Ranch Open Space	Undeveloped land with trees and vegetation, pedestrian trails, picnic areas and benches, and equestrian access	Line 3602 would be adjacent to the open space (MPs 40.6–43.2).
City of San Diego Existing Facilities	Trans County Regional Trail	An existing system of trails that will eventually stretch 110 miles from the California Coastal Trail to the Pacific Crest Trail. Existing uses include bicycling, hiking, and equestrian activities.	Regulator Station 1248 (to be removed) would be adjacent to trail.

Table 3.14-1 Existing and Proposed Recreational Facilities Adjacent to or Crossed by the Proposed Project

County/Township	Recreational Facility	Recreational Facility Details	Proposed Project Component(s)
City of San Diego Existing Facilities	Los Peñasquitos Canyon Preserve	A preserve that encompasses approximately 4,000 acres of Peñasquitos and Lopez Canyons and includes several hiking, bicycling, and/or equestrian trails	Regulator Station 1248 (to be removed) would be located within SDG&E's right-of-way within the Los Peñasquitos Canyon Preserve. This would be directly adjacent to a portion of the San Diego Trans County Regional Trail.
City of San Diego Existing Facilities	Carmel Highland Golf Course	This golf facility was permanently closed in March 2015.	Regulator Station 141 (to be removed) would be adjacent to the golf course. (The station would be located in a landscaped area between the golf course and adjacent residences).
Temporary Workspace			
	City of San Marco		
City of San Marco Existing Facilities	Montiel Park	10-acre park featuring basketball courts, disk golf, dog park, and picnic area	Staging Area/Laydown Area #6D would be across the street from the park.

Sources: All Seasons RV Park and Campground 2017; Castle Creek 2017; City of San Diego 1988, 2016a, 2016b, 2016c; City of Escondido 2016; City of Poway 2016a, 2016b, 2017; Country Club of Rancho Bernardo 2017; Oaks North 2017; Pala Mesa Resort 2016; Rancho Bernardo Inn 2016; Rancho Monserate 2017; San Diego Business Journal 2016; San Dieguito River Park 2016a, 2016b; Scripps Miramar Ranch 2011; The Vineyard at Escondido 2016; Welk Resorts 2017.

Key:

MLV = mainline valve

MP = Milepost

SDG&E = San Diego Gas and Electric Company

3.14.2 Regulatory Setting

This subsection summarizes federal, state, and local laws; regulations; and standards that govern recreation resources.

3.14.2.1 Federal

No federal regulations that govern recreation resources are applicable to the proposed project.

3.14.2.2 State

States are required to have Statewide Comprehensive Outdoor Recreation Plans in order to be eligible for federal Land and Water Conservation Fund Act grants. The 2008 California Outdoor Recreation Plan fulfills this requirement and provides a strategy for statewide outdoor recreation leadership and action to meet identified needs. Of the five state policy areas, three policies are applicable to the proposed project (California State Parks 2008).

- **Adequacy of recreation opportunities:** The supply of parklands, water, open space, and recreation facilities and services must be adequate to meet future and current demands, particularly in the state’s most populated areas.
- **Preservation of natural and cultural resources:** Recreation areas should be planned and carefully managed to provide optimum recreation opportunities without damaging significant natural or cultural resources. Management actions should strive to correct problems that have the potential to damage sensitive areas and degrade resources.
- **Accessible recreational experiences:** All citizens have the right to enjoy California’s park and recreation legacy.

3.14.2.3 Regional and Local

County and city plans, including community plans for San Diego County and the City of San Diego, were reviewed for policies relevant to the proposed project and California Environmental Quality Act significance criteria (see Section 3.14.3, Draft Significance Criteria). Additional plan policies relevant to recreation, but not directly tied to California Environmental Quality Act significance criteria, are presented in Table 3.10-2 of Section 3.10, Land Use and Planning.

County Plans

County of San Diego General Plan (2016)

The Conservation and Open Space Element of the San Diego County General Plan includes the following policy that is applicable to the proposed project (County of San Diego 2016a):

- **Policy COS-23.1 Public Access:** *Provide public access to natural and cultural (where allowed) resource through effective planning that conserves the County’s native wildlife, enhances and restores a continuous network of connected natural habitat and protects water resources.*

Community Trails Master Plan (2005)

The Community Trails Master Plan includes the following policy that is applicable to the proposed project (County of San Diego 2005):

- **Policy CIS 4.8:** *Gates, fencing, and other physical barriers should be used to control access and provide increased user safety when warranted by site conditions.*

City of San Diego Plans

City of San Diego General Plan (2015)

The Recreation Element of the City of San Diego General Plan includes the following policy that is applicable to the proposed project (City of San Diego 2015).

- **Policy RE A.2:** *Use community plan updates to further refine citywide park and recreation land use policies consistent with the Parks Master Plan.*
 - **D.** *Evaluate whether non-residential development would increase demand for park and recreation facilities, on a community basis. Where an increase in demand can be demonstrated, include a policy in the community plan, or in a citywide Park Master Plan, that non-residential development should contribute to the cost of park and recreation facilities.*

Other County and City Plans

The following plans were reviewed; however, no policies applicable to the proposed project were identified:

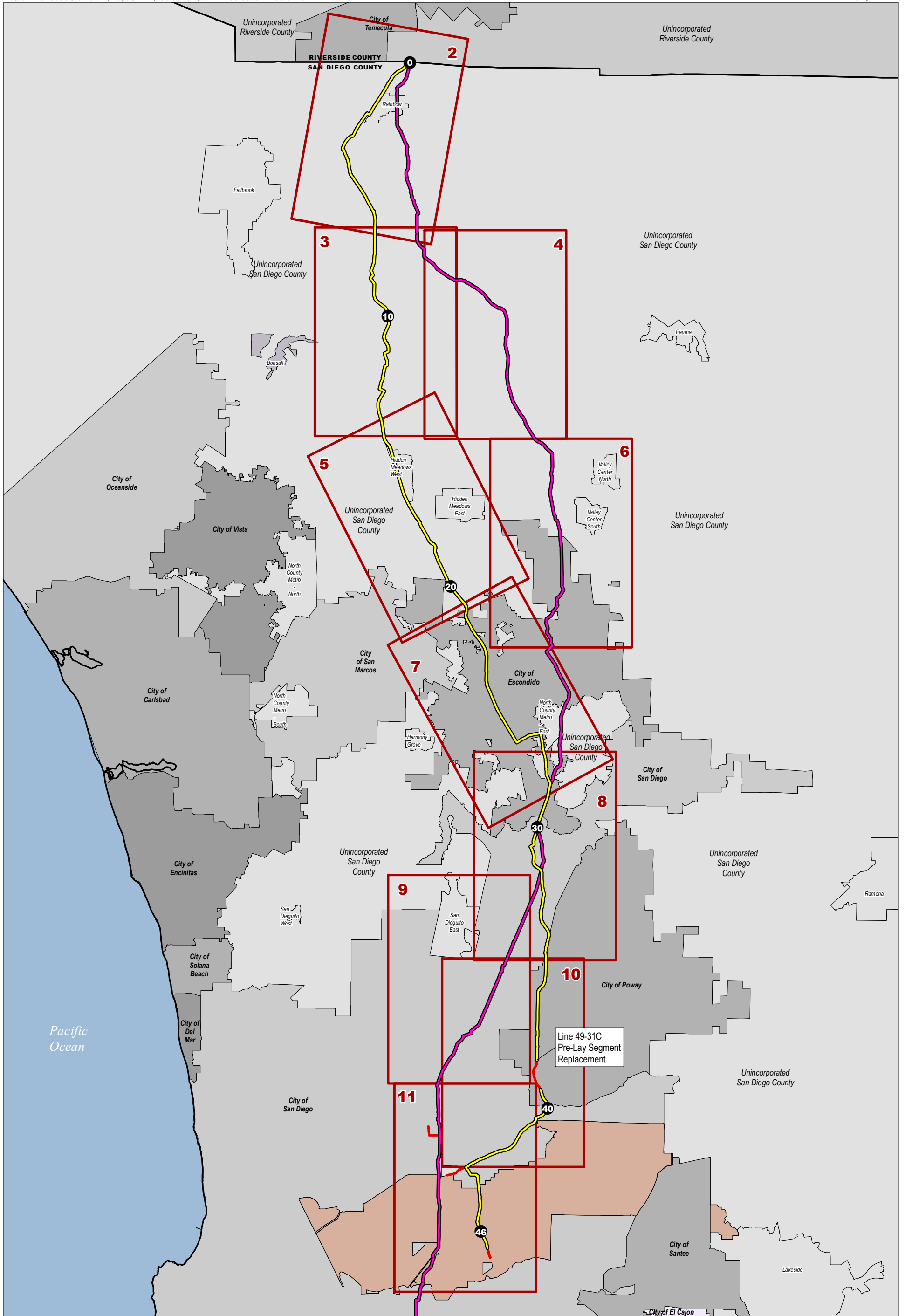
- Rainbow Community Plan (County of San Diego 2014)
- Fallbrook Community Plan (County of San Diego 2016b)
- Bonsall Community Plan (County of San Diego 2011a)
- Valley Center Community Plan (County of San Diego 2015)
- North County Metropolitan Subregional Plan (2011b)
- County of San Diego Parks Master Plan (County of San Diego 2016c)
- San Dieguito River Park Concept Plan (San Dieguito River Park Joint Powers Authority 2002)
- City of Escondido General Plan (City of Escondido 2012)
- City of Poway Comprehensive Plan (City of Poway 1991)
- City of San Diego Ranch Bernardo Community Plan (City of San Diego 2007a)
- City of San Diego Rancho Encantada Precise Plan (City of San Diego 2007b)
- City of San Diego Scripps Miramar Ranch Community Plan (City of San Diego 2013)

3.14.3 Draft Significance Criteria

Had an impact analysis been completed for the proposed project, significance criteria would likely have been based on California Environmental Quality Act Guidelines Appendix G. An impact might have been considered significant if the project would:

- a) Increase the use of existing neighborhood and regional parks or other recreational facilities such that substantial physical deterioration of the facility would occur or be accelerated; or
- b) Include recreational facilities or require the construction or expansion of recreational facilities, which might have an adverse physical effect on the environment.

3.14.4 Draft Analytical Figures



- Milepost
- MCAS Miramar
- Line 3602
- Map Series Index
- Tie-Ins & Extensions
- Existing Line 1600

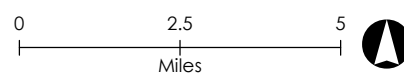
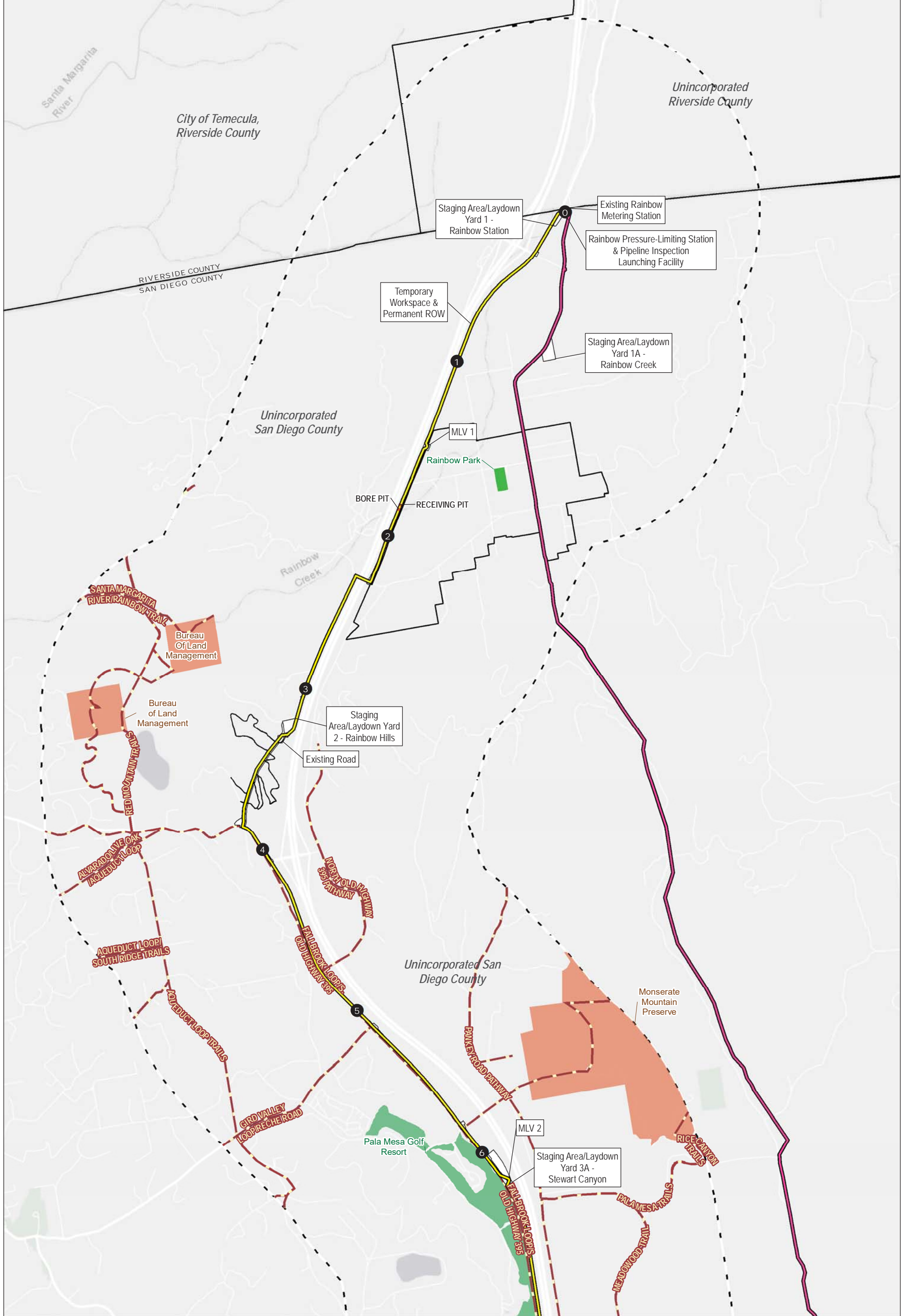


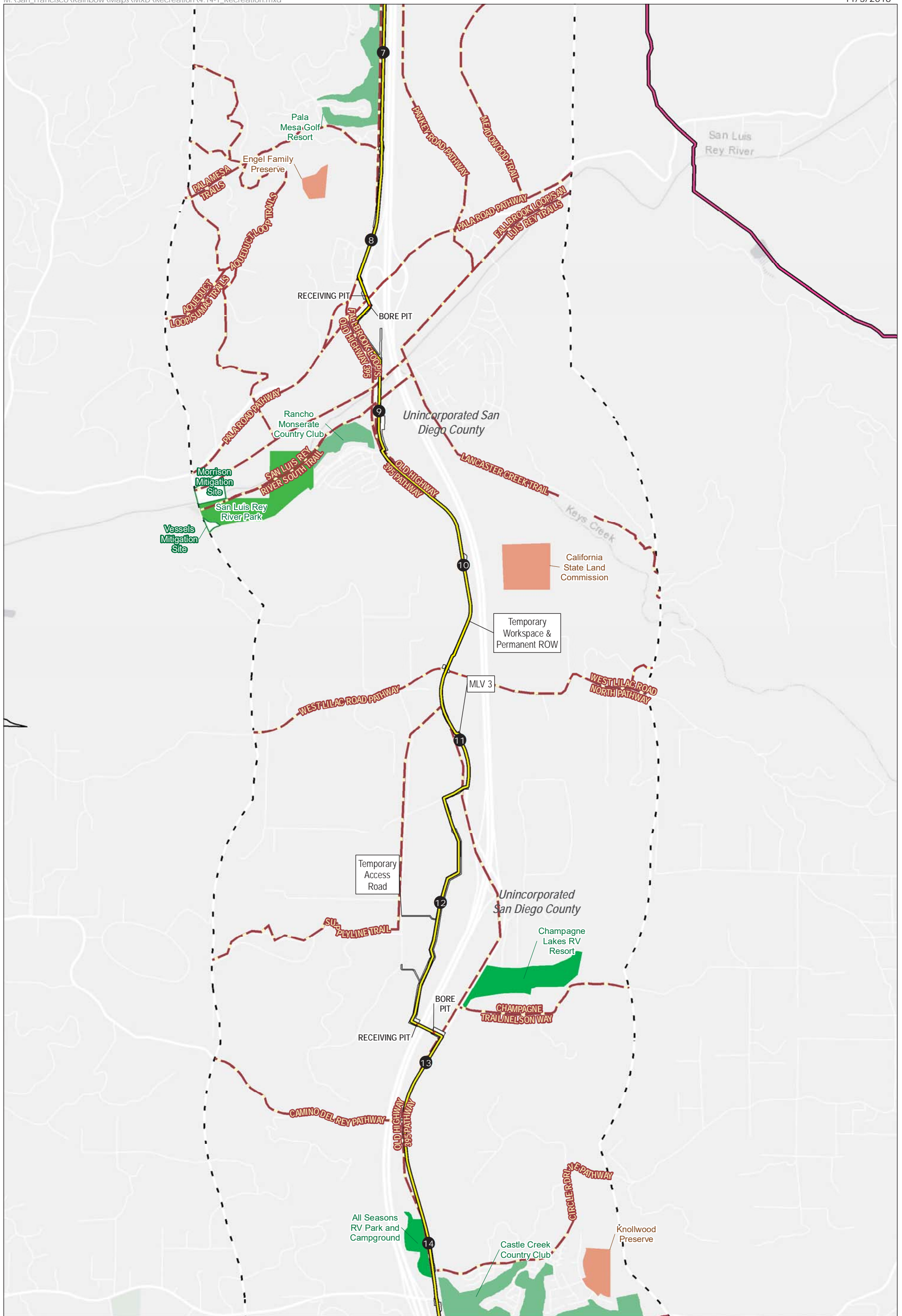
Figure 3.14-1
Parks and Trails within the Study Area
 Page 1 of 11
 Pipeline Safety and Reliability Project - New Natural Gas Line 3602 and De-rating Line 1600
 San Diego County, CA



① Milepost	Trail	Key: ROW Right-Of-Way
Line 3602	Open Space	
Existing Line 1600	Park	0 0.25 0.5 Miles
Bore Pits	Golf Course	
Workspaces		
Municipal Boundary		
1-Mile Buffer		

Figure 3.14-1
Parks and Trails within the Study Area
 Page 2 of 11
 Pipeline Safety and Reliability Project - New Natural Gas Line 3602 and De-rating Line 1600
 San Diego County, CA

Sources: CalFish 2016; ESRI 2012, 2018; GreenInfo 2016; SanGIS 2016; SDG&E 2017; USMC 2017

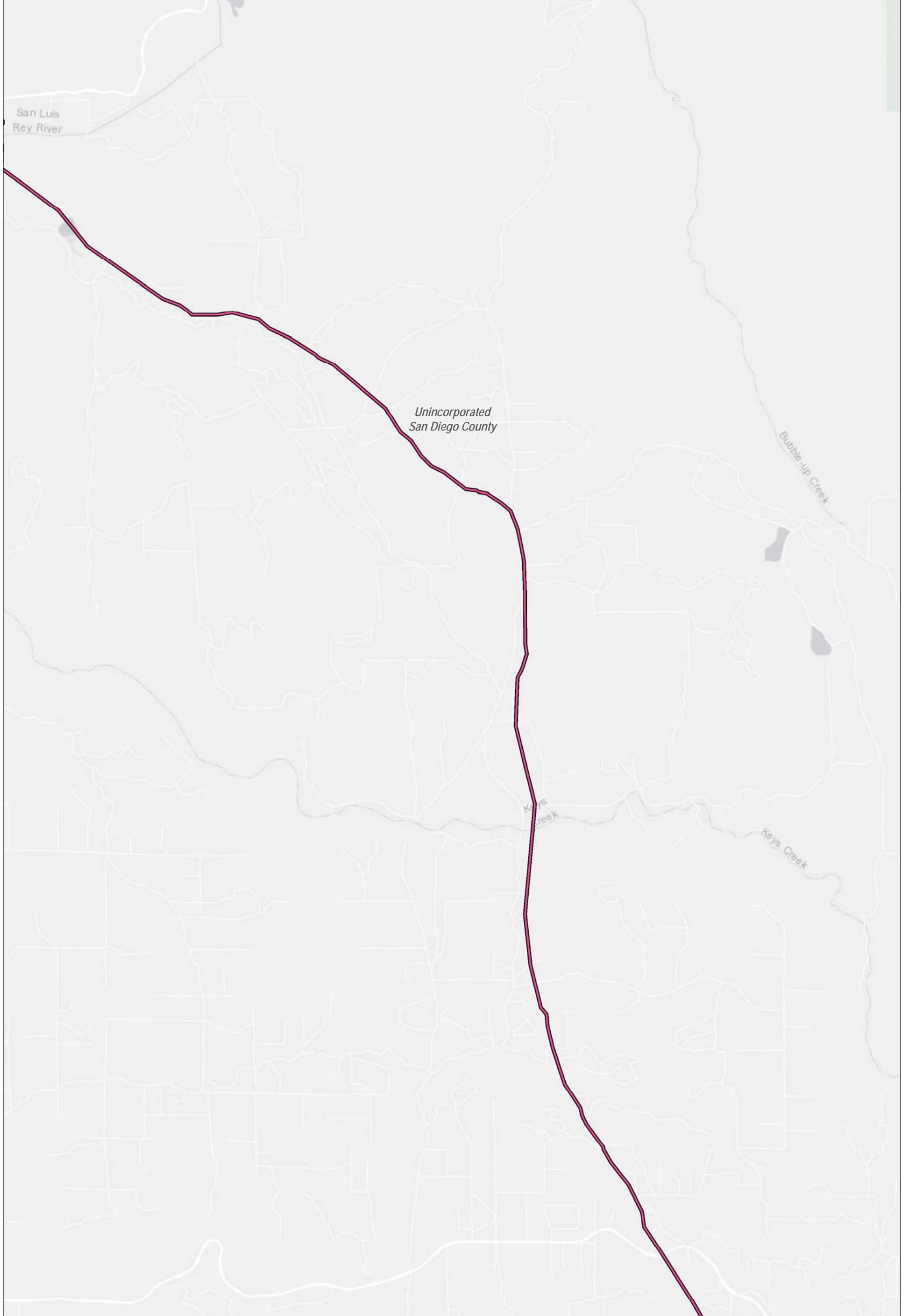


① Milepost	- - - Trail
— Line 3602	■ Open Space
— Existing Line 1600	■ Park
■ Bore Pits	□ Unknown Access
□ Workspaces	■ Golf Course
□ Municipal Boundary	
- - - 1-Mile Buffer	

Key:
 ROW Right-Of-Way

0 0.25 0.5
 Miles

Figure 3.14-1
Parks and Trails within the Study Area
 Page 3 of 11
 Pipeline Safety and Reliability Project - New Natural Gas Line 3602 and De-rating Line 1600
 San Diego County, CA



- Existing Line 1600
- Municipal Boundary

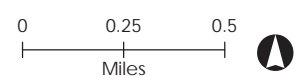
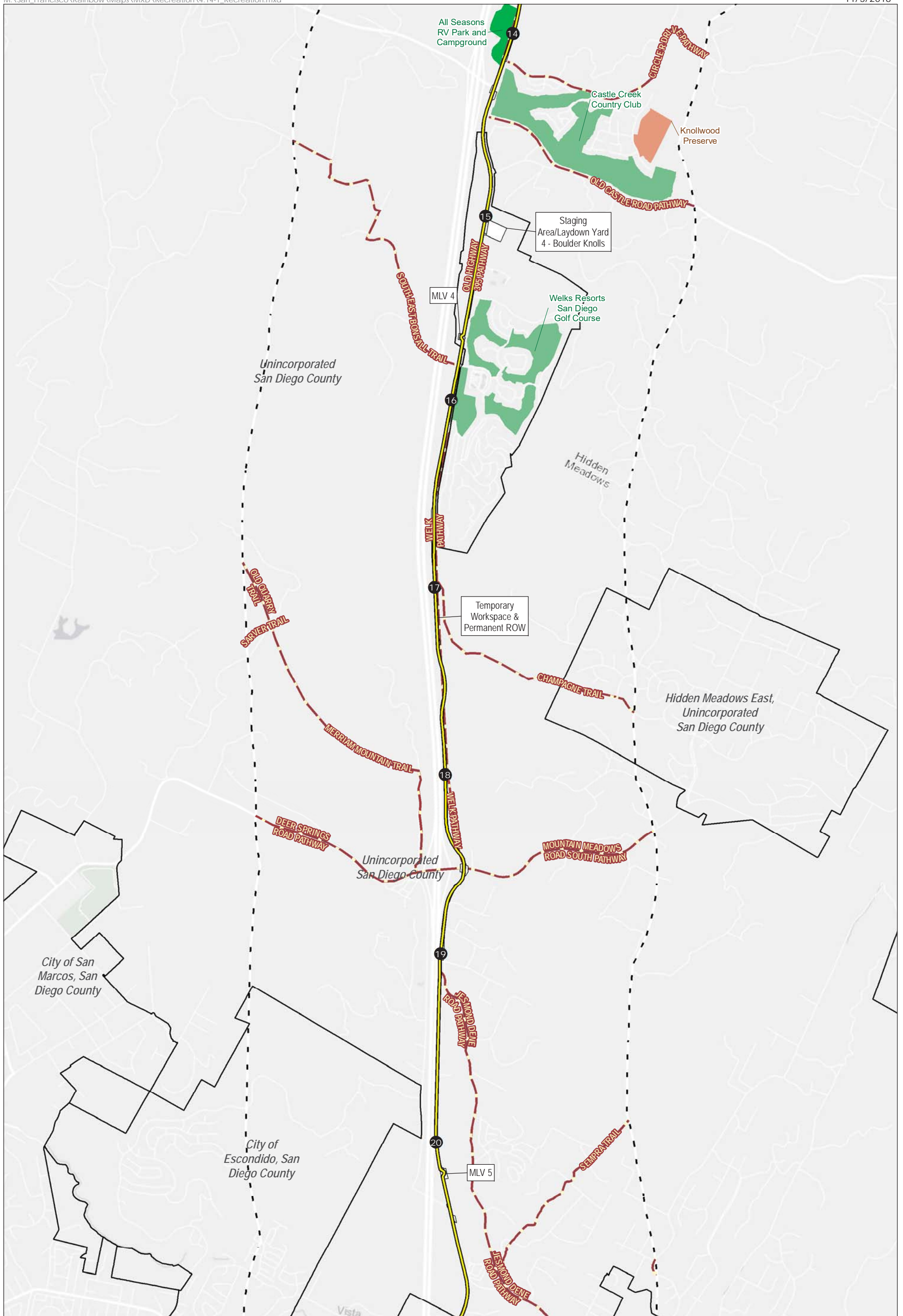


Figure 3.14-1
**Parks and Trails within
 the Study Area**
Page 4 of 11
 Pipeline Safety and Reliability
 Project - New Natural Gas
 Line 3602 and De-rating
 Line 1600
 San Diego County, CA



Key:
ROW Right-Of-Way

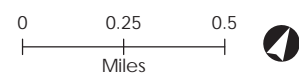
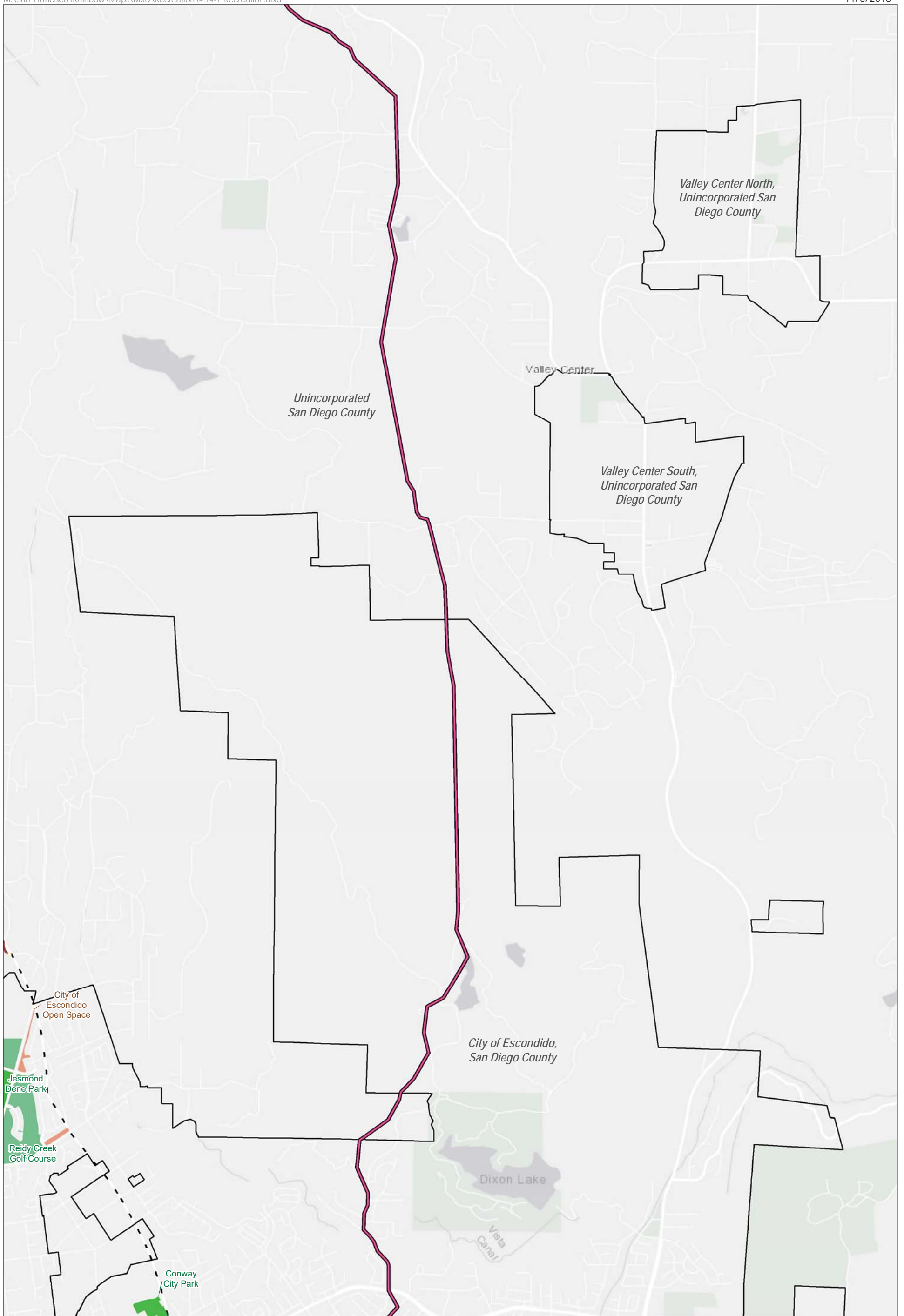


Figure 3.14-1
Parks and Trails within
the Study Area
Page 5 of 11
Pipeline Safety and Reliability
Project - New Natural Gas
Line 3602 and De-rating
Line 1600
San Diego County, CA



- Existing Line 1600
- Municipal Boundary
- 1-Mile Buffer
- Trail
- Open Space
- Park

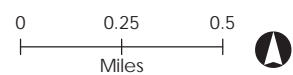
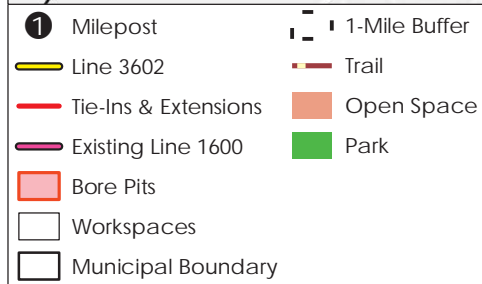
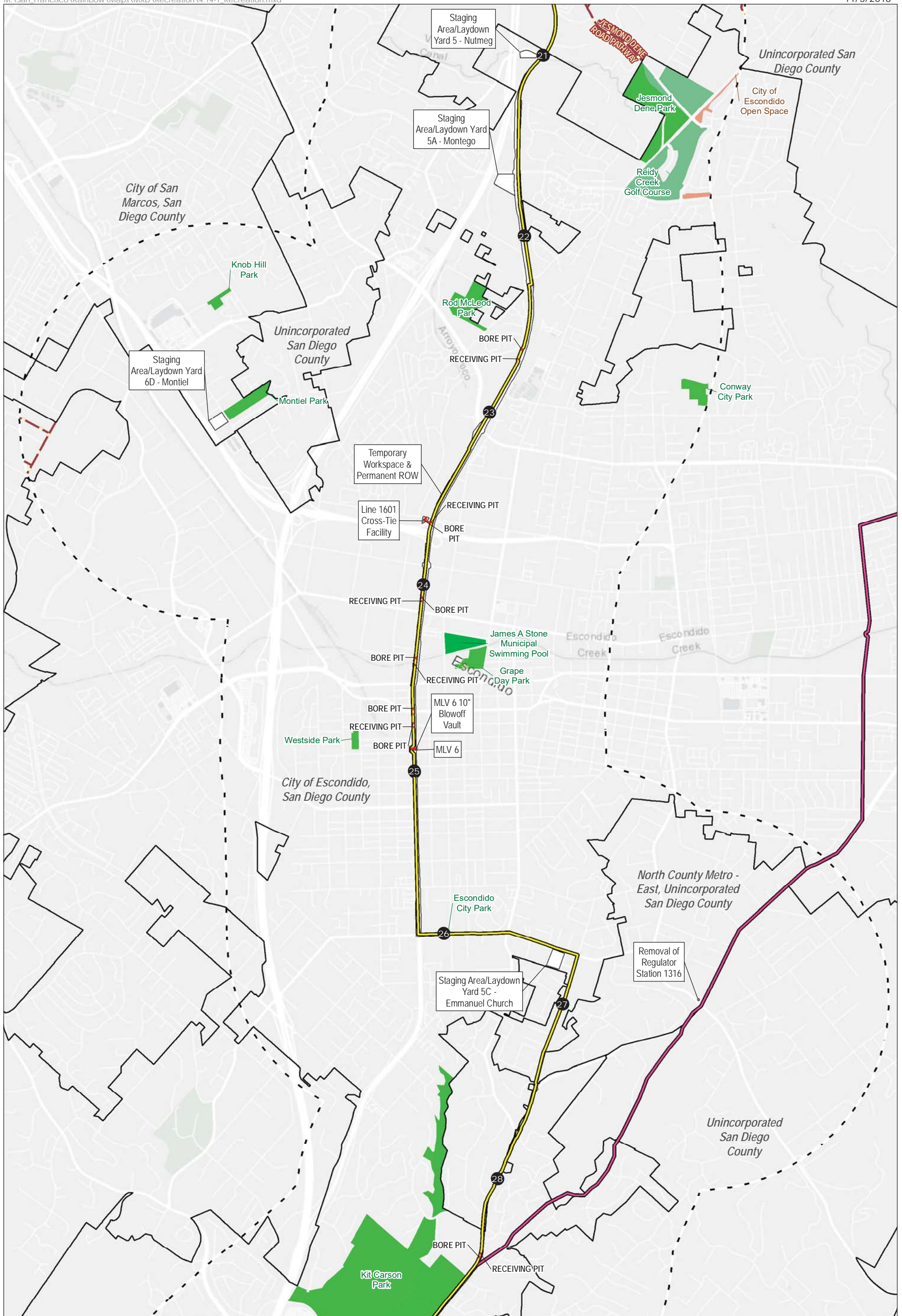


Figure 3.14-1
**Parks and Trails within
 the Study Area**
Page 6 of 11
 Pipeline Safety and Reliability
 Project - New Natural Gas
 Line 3602 and De-rating
 Line 1600
 San Diego County, CA



Key:
MLV Mainline Valve
ROW Right-Of-Way

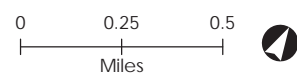
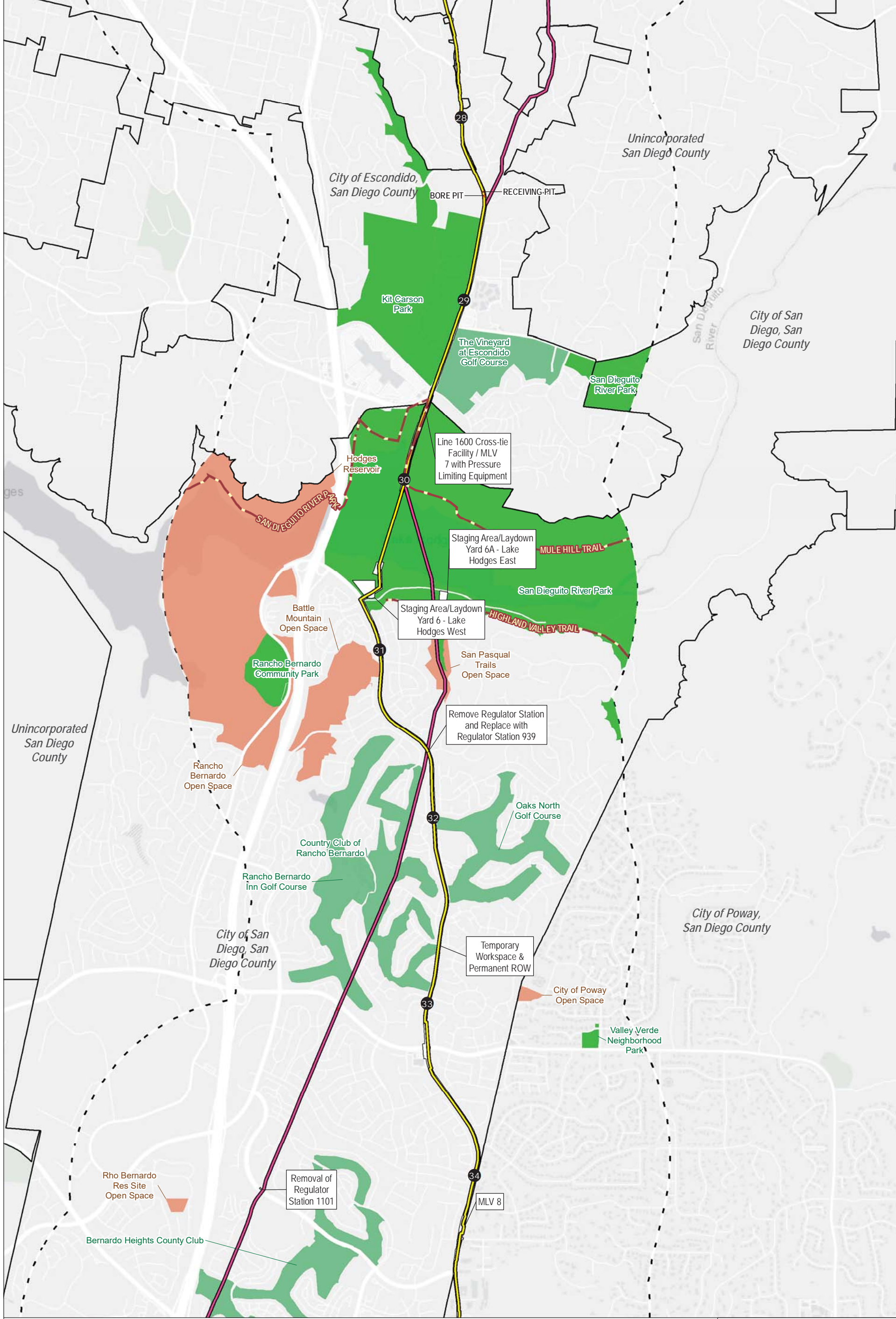


Figure 3.14-1
Parks and Trails within the Study Area
Page 7 of 11
Pipeline Safety and Reliability Project - New Natural Gas Line 3602 and De-rating Line 1600
San Diego County, CA



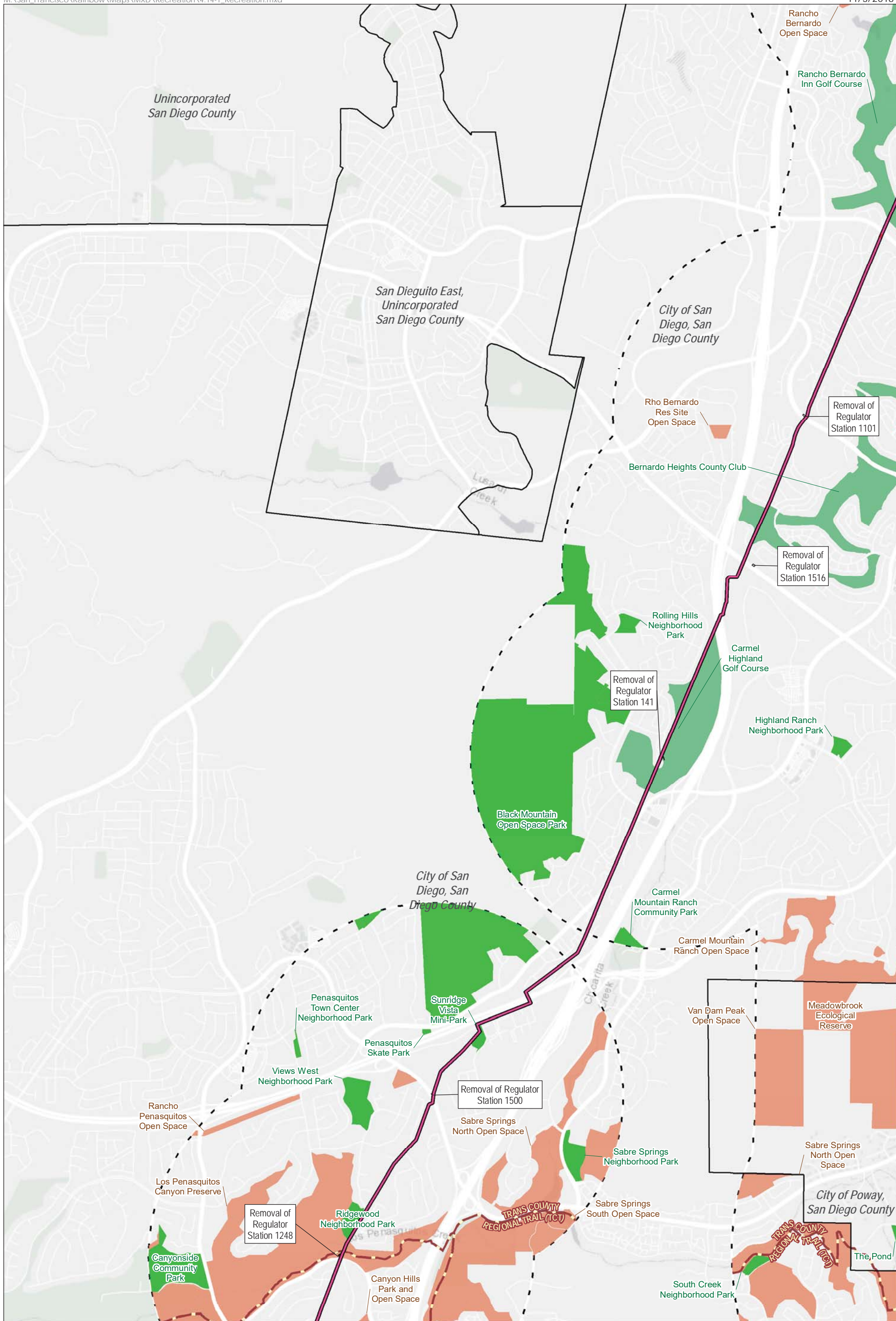
- ① Milepost
- Line 3602
- Tie-Ins & Extensions
- Existing Line 1600
- Bore Pits
- Workspaces
- Municipal Boundary
- 1-Mile Buffer
- Trail
- Open Space
- Park
- Golf Course

Key:
 ROW Right-Of-Way

0 0.25 0.5
 Miles

Figure 3.14-1
**Parks and Trails within
 the Study Area**
 Page 8 of 11
 Pipeline Safety and Reliability
 Project - New Natural Gas
 Line 3602 and De-rating
 Line 1600
 San Diego County, CA

Sources: CalFish 2016; ESRI 2012, 2018; GreenInfo 2016; SanGIS 2016; SDG&E 2017; USMC 2017



- Existing Line 1600
- Golf Course
- Workspaces
- Municipal Boundary
- 1-Mile Buffer
- Trail
- Open Space
- Park

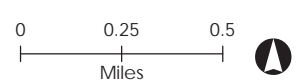
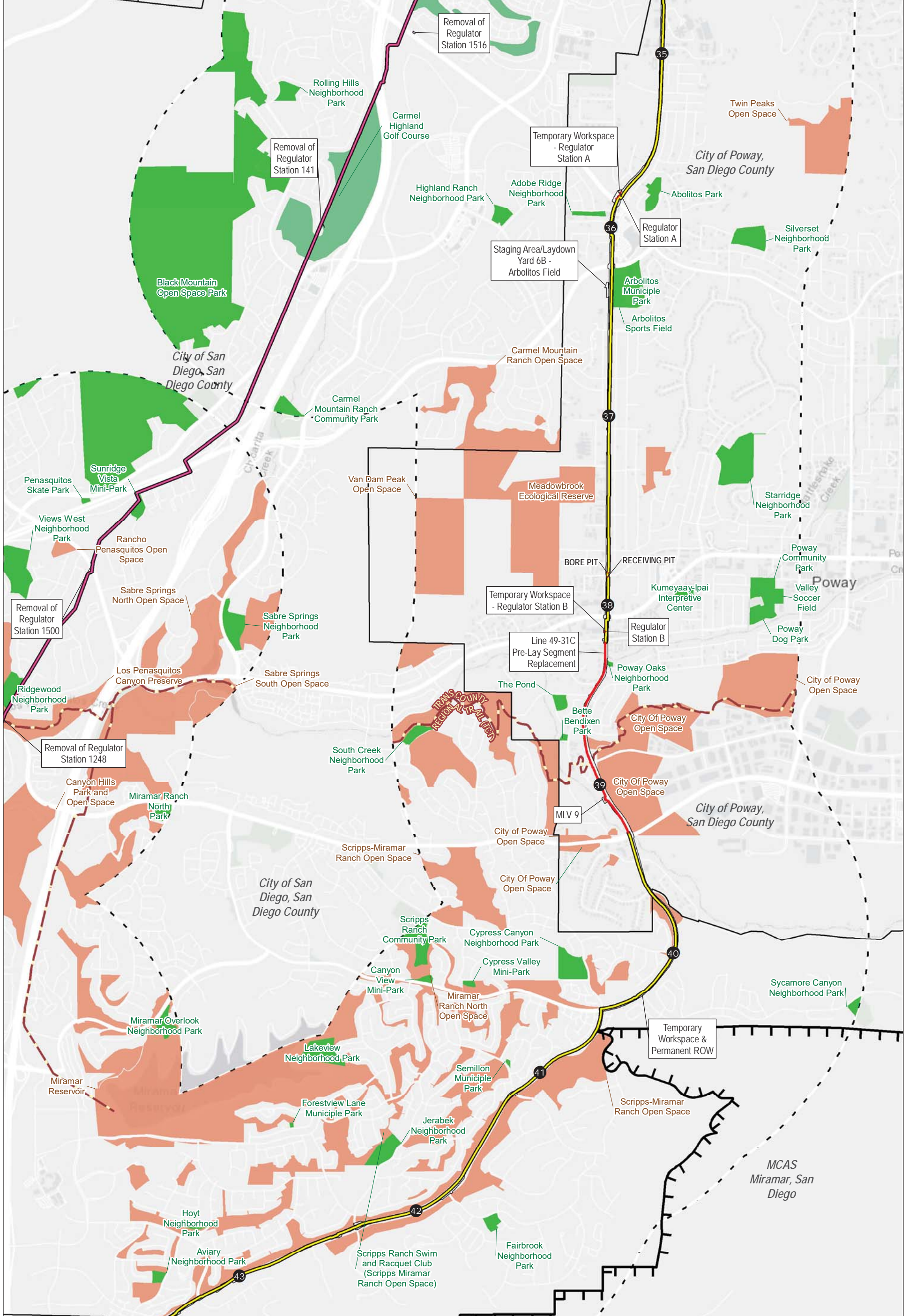
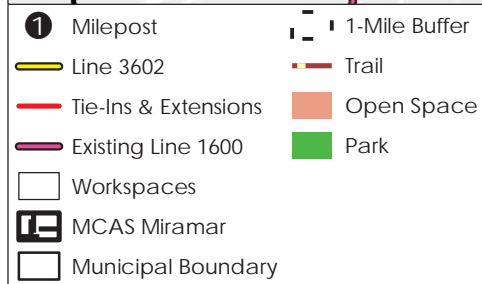
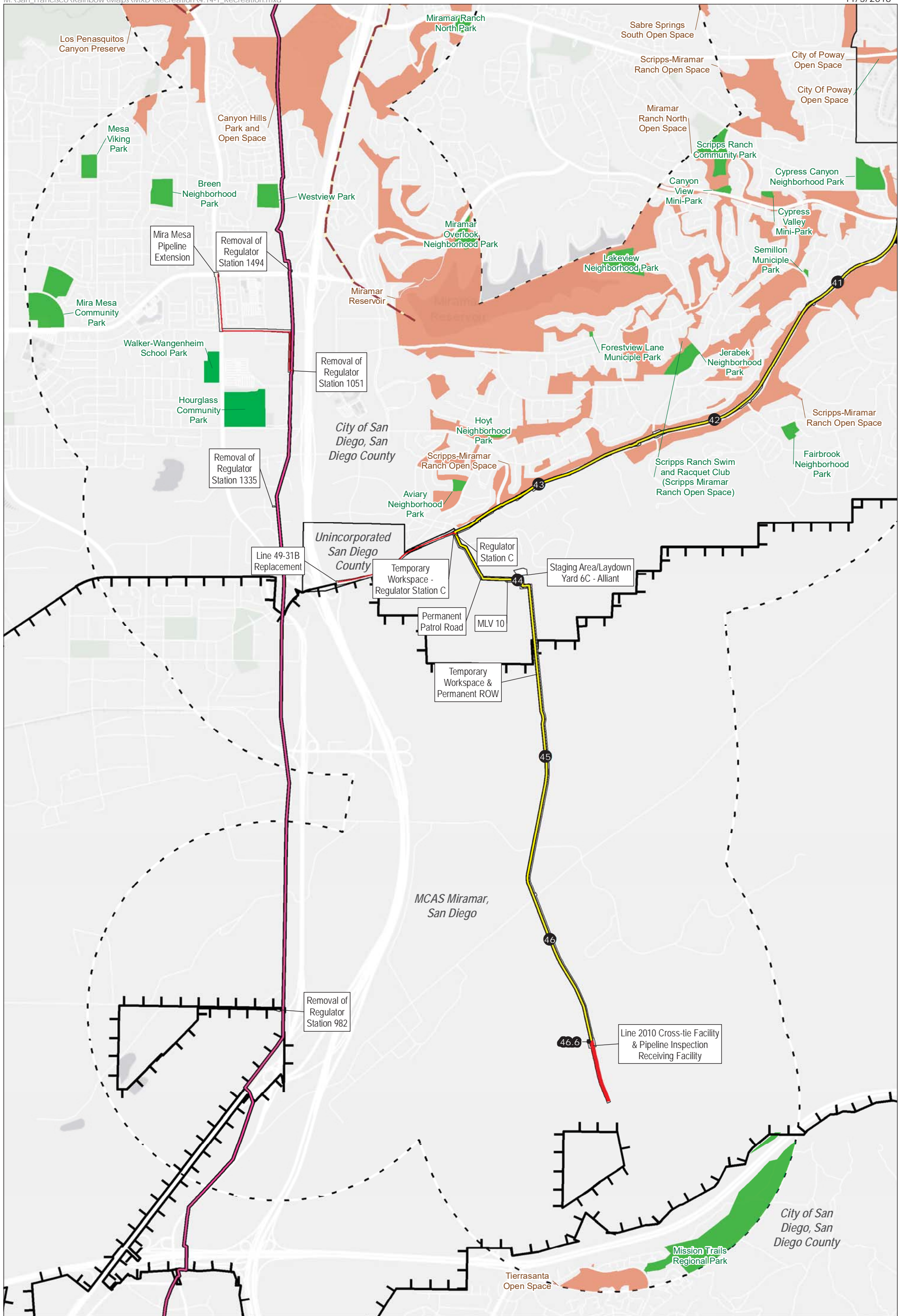


Figure 3.14-1
Parks and Trails within the Study Area
 Page 9 of 11
 Pipeline Safety and Reliability Project - New Natural Gas Line 3602 and De-rating Line 1600
 San Diego County, CA



<ul style="list-style-type: none"> ① Milepost — Line 3602 — Tie-Ins & Extensions — Existing Line 1600 — Bore Pits — Workspaces MCAS Miramar 	<ul style="list-style-type: none"> □ Municipal Boundary - - - 1-Mile Buffer — Trail — Open Space — Park — Golf Course 	<p>Key: ROW Right-Of-Way</p> <p>0 0.25 0.5 Miles</p>	<p>Figure 3.14-1 Parks and Trails within the Study Area Page 10 of 11 Pipeline Safety and Reliability Project - New Natural Gas Line 3602 and De-rating Line 1600 San Diego County, CA</p>
----------------------------------------------------------------------------------------------------------------------------------------------------------------------------------------------------------------------	-----------------------------------------------------------------------------------------------------------------------------------------------------------------------------------	--------------------------------------------------------------	-------------------------------------------------------------------------------------------------------------------------------------------------------------------------------------------------------------------



Key:
ROW Right-Of-Way

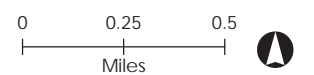


Figure 3.14-1
Parks and Trails within
the Study Area
Page 11 of 11
Pipeline Safety and Reliability
Project - New Natural Gas
Line 3602 and De-rating
Line 1600
San Diego County, CA

3.14.5 References

- All Seasons RV Park and Campground. 2017. “Park Amenities.” Accessed August 31, 2017.
<http://allseasonsrvpark.com/>
- California State Parks. 2008. *California Outdoor Recreation Plan*. Accessed July 31, 2017.
<http://www.parks.ca.gov/pages/795/files/2009-2014%20corp.pdf>
- CalFish. 2016. CalFish. Dec 2016. CDFW Owned and Operated Lands and Conservation Easements. Accessed May 24, 2017.
- Castle Creek. 2017. “Castle Creek Golf Course, About Us.” Accessed November 2, 2017.
<http://www.castlecreekcc.com/aboutus/>
- City of Escondido. 2012. *Resource Conservation Element*. Accessed on August 2, 2016.
<http://www.escondido.org/Data/Sites/1/media/PDFs/Planning/GPUpdate/GeneralPlanChapterVII.pdf>
- _____. 2016. “Kit Carson Park.” Accessed August 2, 2016. <http://www.escondido.org/kit-carson-park.aspx>
- City of Poway. 1991. *Poway Comprehensive Plan*. Accessed November 9, 2017.
<http://www.sdrp.org/wordpress/wp-content/uploads/SDRP-Concept-Plan.pdf>
- _____. 2016a. “Facilities, Adobe Ridge Neighborhood Park.” Accessed August 3, 2016.
<http://poway.org/Facilities/Facility/Details/Adobe-Ridge-Neighborhood-Park-51>
- _____. 2016b. “Facilities, Arbolitos Sports Fields.” Accessed August 3, 2016.
<http://poway.org/facilities/facility/details/Arbolitos-Sports-Fields-54>
- _____. 2017. “Facilities, Poway Oaks Neighborhood Park.” Accessed September 5, 2017.
<http://poway.org/Facilities/Facility/Details/Poway-Oaks-Neighborhood-Park-63>
- City of San Diego. 1988. *Rancho Bernardo Community Plan*. Accessed August 8, 2016.
<https://www.sandiego.gov/sites/default/files/legacy/planning/community/profiles/ranchobernardo/pdf/rbcfullversion.pdf>
- _____. 2007a. *Rancho Bernardo Community Plan*. Accessed November 9, 2017.
<https://www.sandiego.gov/sites/default/files/legacy/planning/community/profiles/ranchobernardo/pdf/rbcfullversion.pdf>
- _____. 2007b. *Rancho Encantada Precise Plan*. Accessed November 9, 2017.
<https://www.sandiego.gov/sites/default/files/legacy/planning/community/profiles/pdf/cp/refull.pdf>
- _____. 2013. *Scripts Miramar Ranch Community Plan*. Accessed August 31, 2017.
<https://www.sandiego.gov/planning/community/profiles/scrippsmiramarranch/plan>
- _____. 2015. *City of San Diego General Plan, Recreation Element*. Accessed August 31, 2017.
<https://www.sandiego.gov/planning/genplan>

- _____. 2016a. “Los Peñasquitos Canyon Preserve.” Accessed August 2, 2016.
<http://www.sandiego.gov/park-and-recreation/parks/osp/lospenasquitos/>
- _____. 2016b. “Scripps Ranch-Miramar Ranch North.” Accessed August 3, 2016.
<https://www.sandiego.gov/citycouncil/cd5/communities/scrippsranhmiramarranchnorth>
- _____. 2016c. “Carmel Mountain Ranch / Sabre Springs Recreation Center.” Accessed August 9, 2016. <https://www.sandiego.gov/park-and-recreation/centers/recctr/carmelsabre>
- County of San Diego. 2005. “Section 10, Regional Trail Plans.” Community Trails Master Plan. Accessed July 26, 2017. <https://www.sandiegocounty.gov/content/sdc/pds/community-trails-master-plan.html>
- _____. 2011a. *County of San Diego General Plan, Bonsall Community Plan*. Accessed on June 29, 2017. <http://www.sandiegocounty.gov/pds/generalplan.html>
- _____. 2011b. *North County Metropolitan Subregional Plan, San Diego County General Plan*. Accessed on June 29, 2017. <http://www.sandiegocounty.gov/pds/generalplan.html>
- _____. 2014. *County of San Diego General Plan, Rainbow Community Plan*. Accessed June 29, 2017. <http://www.sandiegocounty.gov/content/sdc/pds/generalplan.html>
- _____. 2015. *Valley Center Community Plan, San Diego County General Plan*. Accessed June 29, 2017. <http://www.sandiegocounty.gov/content/sdc/pds/generalplan.html>
- _____. 2016a. *County of San Diego General Plan, Conservation and Open Space Element*. Accessed on June 29, 2017. <http://www.sandiegocounty.gov/pds/generalplan.html>
- _____. 2016b. *County of San Diego General Plan Update, Fallbrook Community Plan*. Accessed on June 29, 2017. <http://www.sandiegocounty.gov/pds/generalplan.html>.
- _____. 2016c. *Parks Master Plan*. Accessed November 9, 2017.
<http://www.sandiegocounty.gov/content/dam/sdc/parks/CAPRA/2.0%20EXHIBITS/2.4A%20Master%20Plan.pdf>
- Country Club of Rancho Bernardo. 2017. “Golf.” Accessed November 2, 2017.
<http://www.ccofrb.com/Default.aspx?p=dynamicmodule&pageid=379450&ssid=296531&vnf=1>
- Earth Systems Research Institute (ESRI). 2012. “Detailed Counties,” “recreas,” “gchurch,” “airportp.” Data & Maps for ArcGIS® version 10.1. Redlands, California.
- Esri. 2018. “World Light Gray Base” [basemap]. Scale Not Given. August 15, 2018. Accessed November 3, 2018. http://goto.arcgisonline.com/maps/World_Light_Gray_Base
- GreenInfo (Greeninfo Network). 2016. California Protected Areas Database (CPAD - fee owned lands). Accessed May 23 2017 <http://www.calands.org/data>
- Oaks North. 2017. “About Oaks North.” Accessed November 2, 2017. <https://www.jcgolf.com/san-diego-golf-courses/oaks-north/>
- Pala Mesa Resort. 2016. “Golf.” Accessed August 8, 2016. http://www.palamesa.com/th_portfolio/golf/

- Rancho Bernardo Inn. 2016. “Guide to Hiking Trails.” Accessed August 2, 2016.
http://www.ranchobernardoinn.com/pdf/RBI_%20Hiking%20Map_%20Final.pdf
- Rancho Monserate. 2017. “Rancho Monserate.” Accessed November 2, 2017.
<http://www.ranchomonseratecountryclub.com/>
- San Diego Business Journal. 2016. “New Homes Are Planned After \$14.5M Purchase of Former Golf Course.” Accessed September 5, 2017. <http://www.sdbj.com/news/2016/jul/29/new-homes-are-planned-after-145m-purchase-former-g/>
- San Dieguito River Park. 2016a. “Trails.” Accessed August 3, 2016.
<http://www.sdrp.org/wordpress/trails/>
- _____. 2016b. “About Us.” Accessed August 8, 2016. <http://www.sdrp.org/wordpress/about/>
- San Dieguito River Park Joint Powers Authority. 2002. *San Dieguito River Park Concept Plan*. Accessed November 9, 2017. <http://www.sdrp.org/wordpress/wp-content/uploads/SDRP-Concept-Plan.pdf>
- SanGIS. 2016. County Assessor. “Municipal Boundaries” SanGIS Data Warehouse. August 10, 2016. San Diego Geographic Information Source - JPA. Accessed Feb 13, 2017.
<http://www.sangis.org/download/>
- Scripps Miramar Ranch. 2011. *Scripps Miramar Ranch Community Plan*.
- SDG&E (San Diego Gas & Electric Company). 2017. Project features provided by the applicants.
- USMC (United States Marine Corps). 2017. MCAS Miramar boundary data provided to Ecology and Environment, Inc. on May 8, 2017.
- Vineyard at Escondido, The. 2016. Accessed August 2, 2016. <http://www.vineyardatescondido.com>
- Welk Resorts. 2017. Welk Resorts, San Diego. Accessed August 31, 2017. <https://welkresorts.com/san-diego/>